
Regulatory Tools to Advance Decarbonization

Wendy Gerlitz, Manager, Regulatory Policy



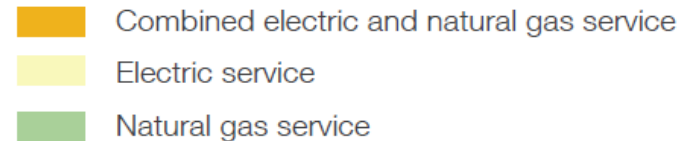
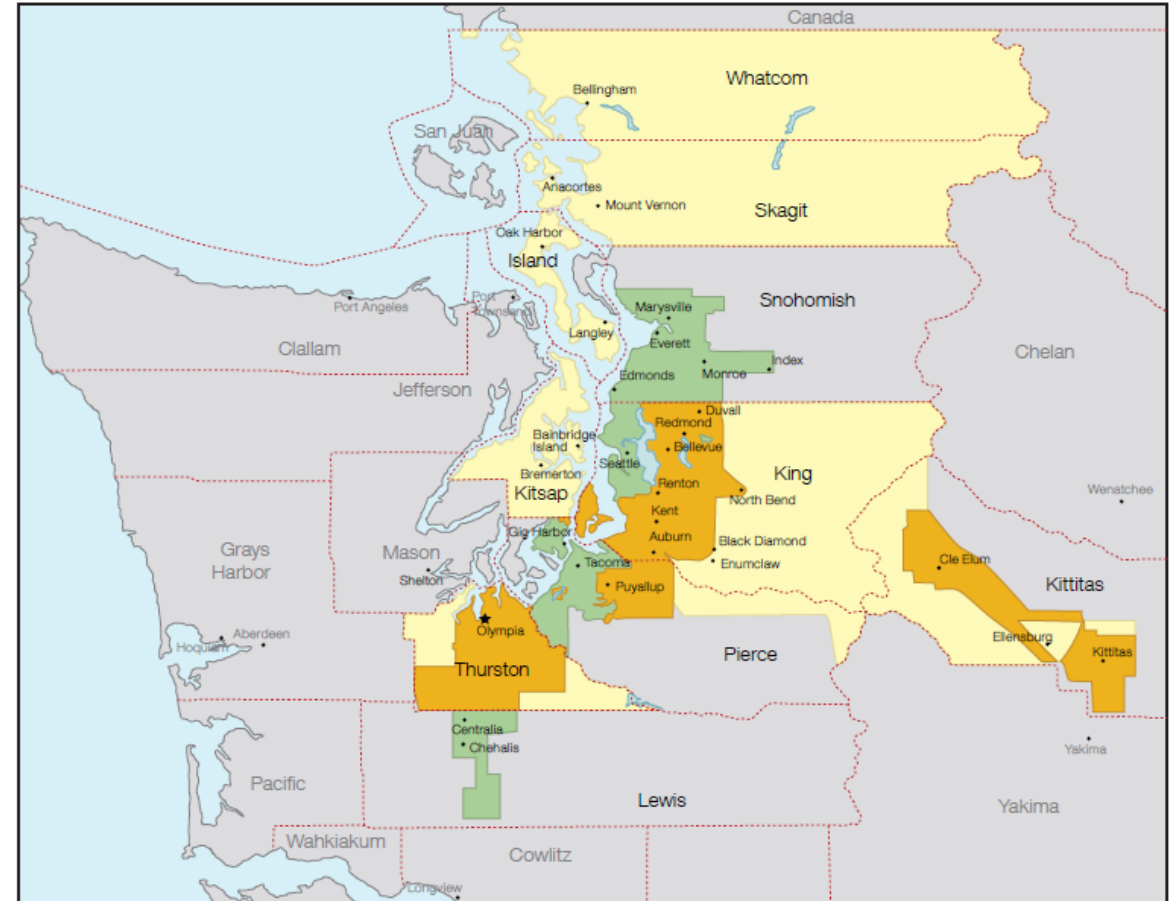
June 15, 2022

Puget Sound Energy

- ◆ Service area: 6,000 square miles, primarily in Western Washington
- ◆ Nearly 1.2 million electric customers
- ◆ Nearly 900,000 natural gas customers
- ◆ 3,100 employees
- ◆ 5,179 MW of generation capacity (owned, operated, contracted)
- ◆ 23,700 miles electric distribution system; 2,900 miles electric transmission* system
- ◆ 12,955 miles natural gas pipeline; 13,351 miles natural gas service lines

Data as of July 2021

* Includes jointly owned transmission



By 2045, we aspire to be a Beyond Net Zero carbon energy company

- ◆ Target: **Reduce our own carbon emissions to net zero** and go beyond by **helping other sectors** enable carbon reduction across Washington.
- ◆ Holistic approach encompasses our **entire energy supply**—both electric and natural gas—our operations, and the positive impact that we can have on other industries and sectors.



PSE operations and electric supply

We will achieve the following

- ◆ Net zero carbon emissions for all PSE operations and electric supply by 2020
- ◆ 100% carbon free electric supply by 2045



Natural gas sales customer end use

Our aspirational objective

- ◆ Reduce customer end use carbon emissions 30% by 2030
- ◆ Net zero carbon emissions for customer end use by 2045

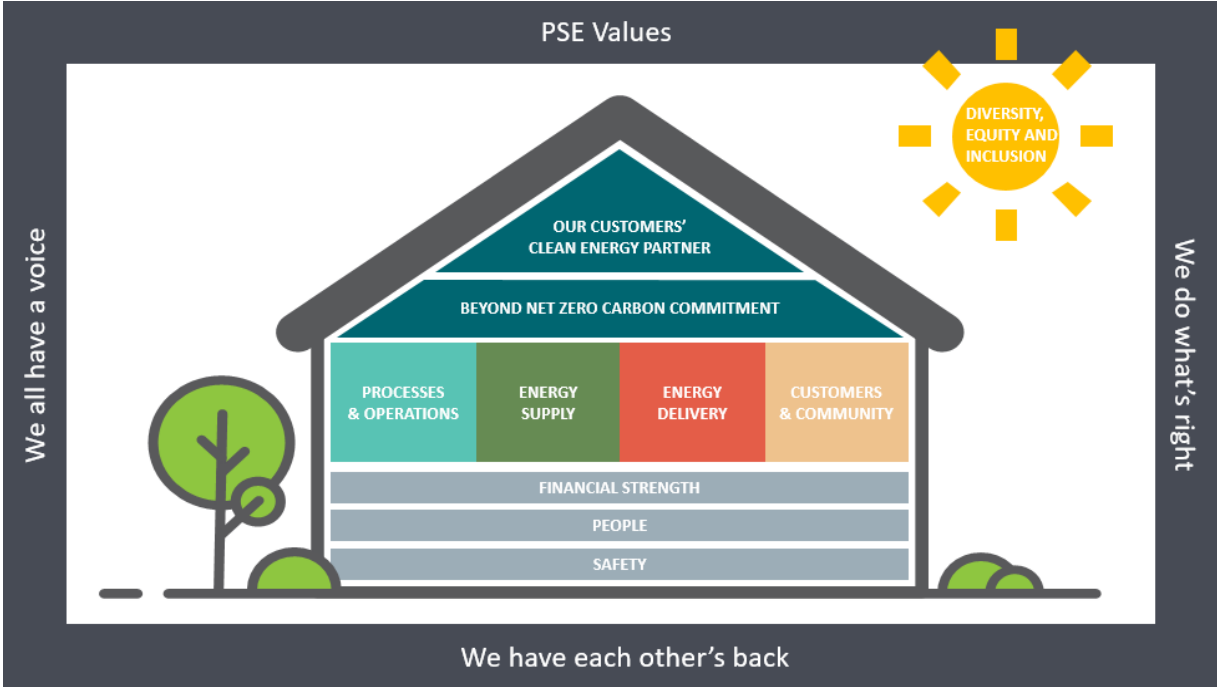


Beyond PSE reported emissions

We will help other sectors reduce carbon

- ◆ Electric vehicles
- ◆ LNG for marine and long haul trucking
- ◆ RNG/hydrogen or other low carbon fuels for transportation
- ◆ Upstream methane emission reduction

Diversity, equity and inclusion must shine on all that we do



Our DEI playbook has four focus areas

