

Assessing the need and cost for new transmission

NW Clean and Affordable Energy Conference
May 29, 2015; 1:00-2:30 pm

DAVE ANGELL, IDAHO POWER

MAURY GALBRAITH, WESTERN INTERSTATE ENERGY BOARD

KEN MILLER, SNAKE RIVER ALLIANCE

CAMERON YOURKOWSKI, RENEWABLE NORTHWEST

Boardman-to-Hemingway and Gateway West transmission lines



Basic facts

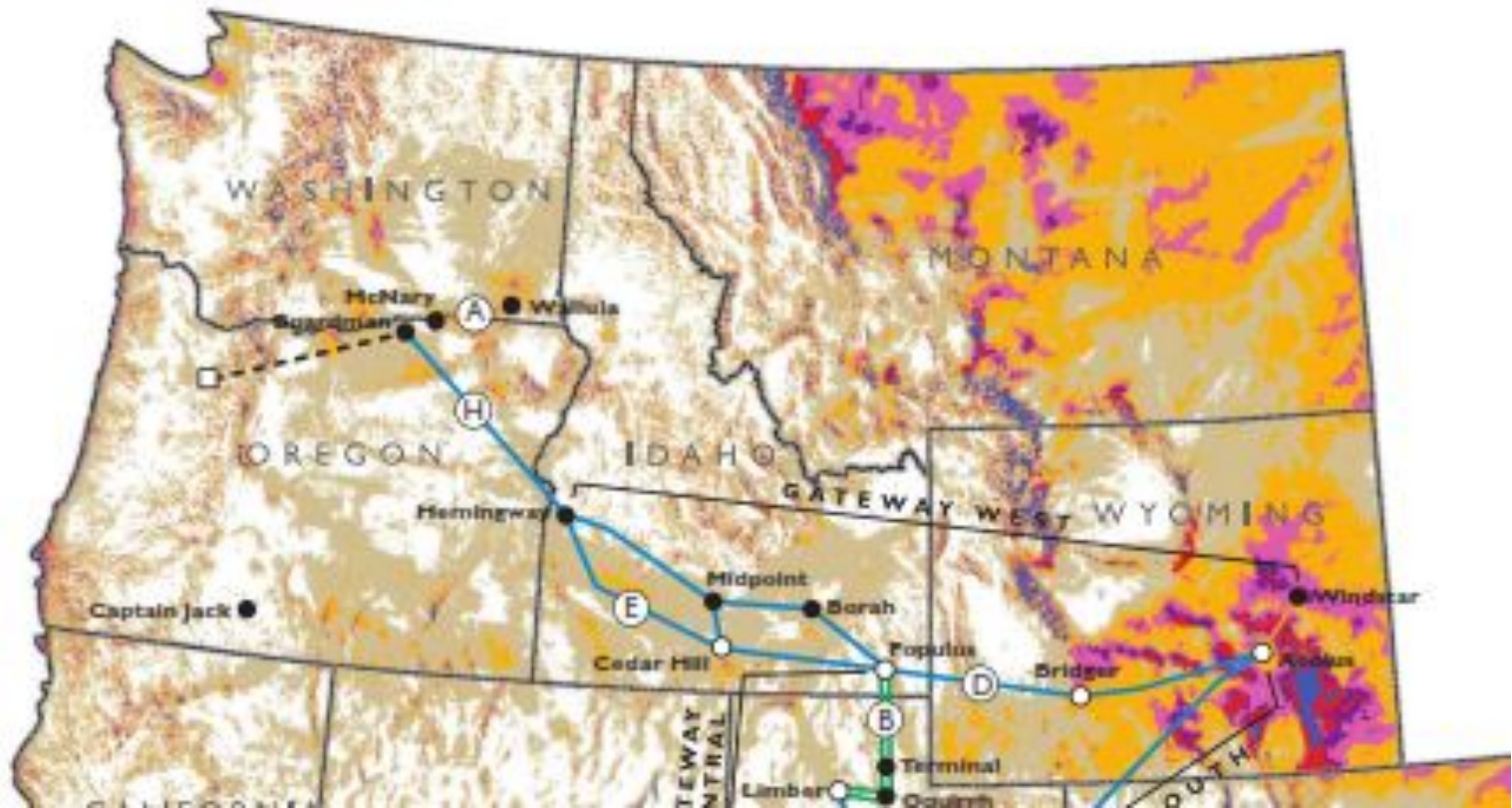
BOARDMAN TO HEMINGWAY

- PacifiCorp, BPA, Idaho Power
- 300 miles
- 500 kV, single circuit
- currently working on FEIS
- in service 2020 or beyond

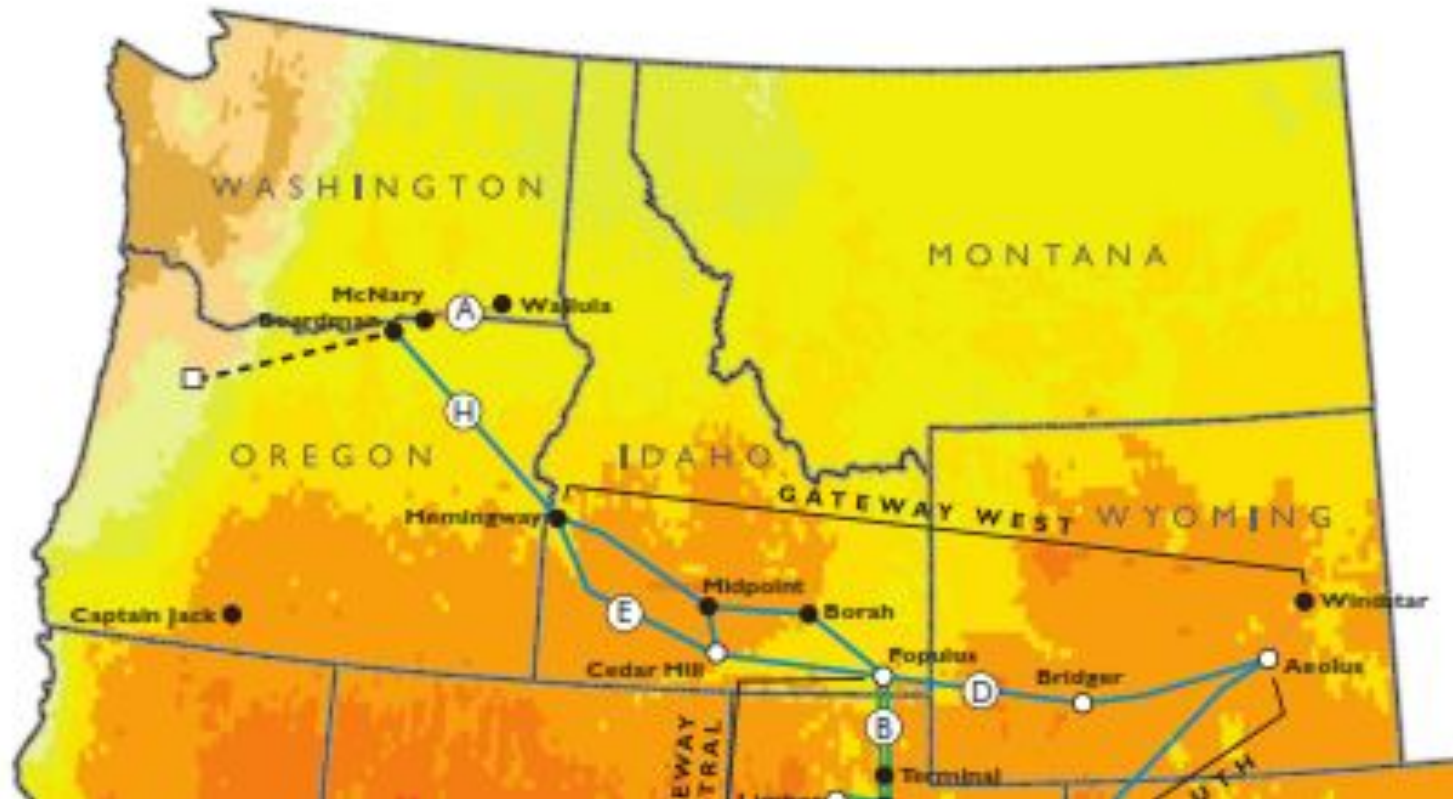
GATEWAY WEST

- Rocky Mountain Power, Idaho Power
- 1,000 miles
- 500/230 kV
- ROD for Segments 1-7, 10
- Supplemental review for segments 8 and 9 in Idaho
- completion 2019-2024

Transmission lines and wind potential



Transmission lines and solar potential



Source: NREL